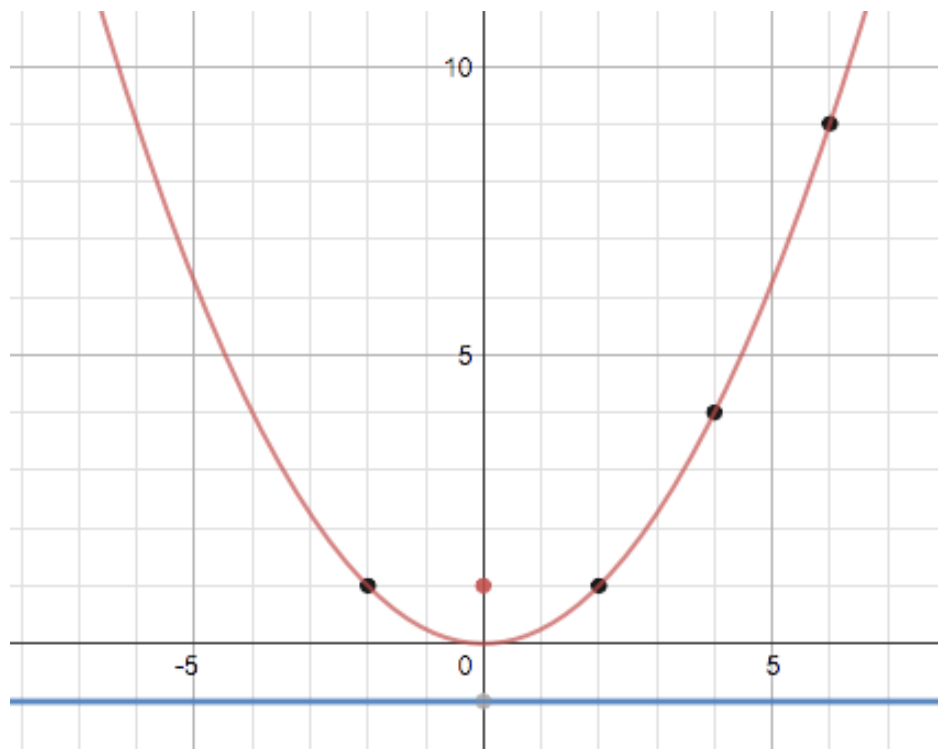


Equation	Definition of a parabola
$x = \sqrt{4y}$	A parabola is the set of points that are equal distance from the focus and the directrix .

1. Use either the equation or the definition of a parabola and the Pythagorean Theorem to find the x-value of the point on the parabola that has a y-value of 3.5.



2. Compare your method with the method of Sasha and Keoni. What are the advantages and disadvantages of using the equation $x = \sqrt{4y}$ or using the definition?