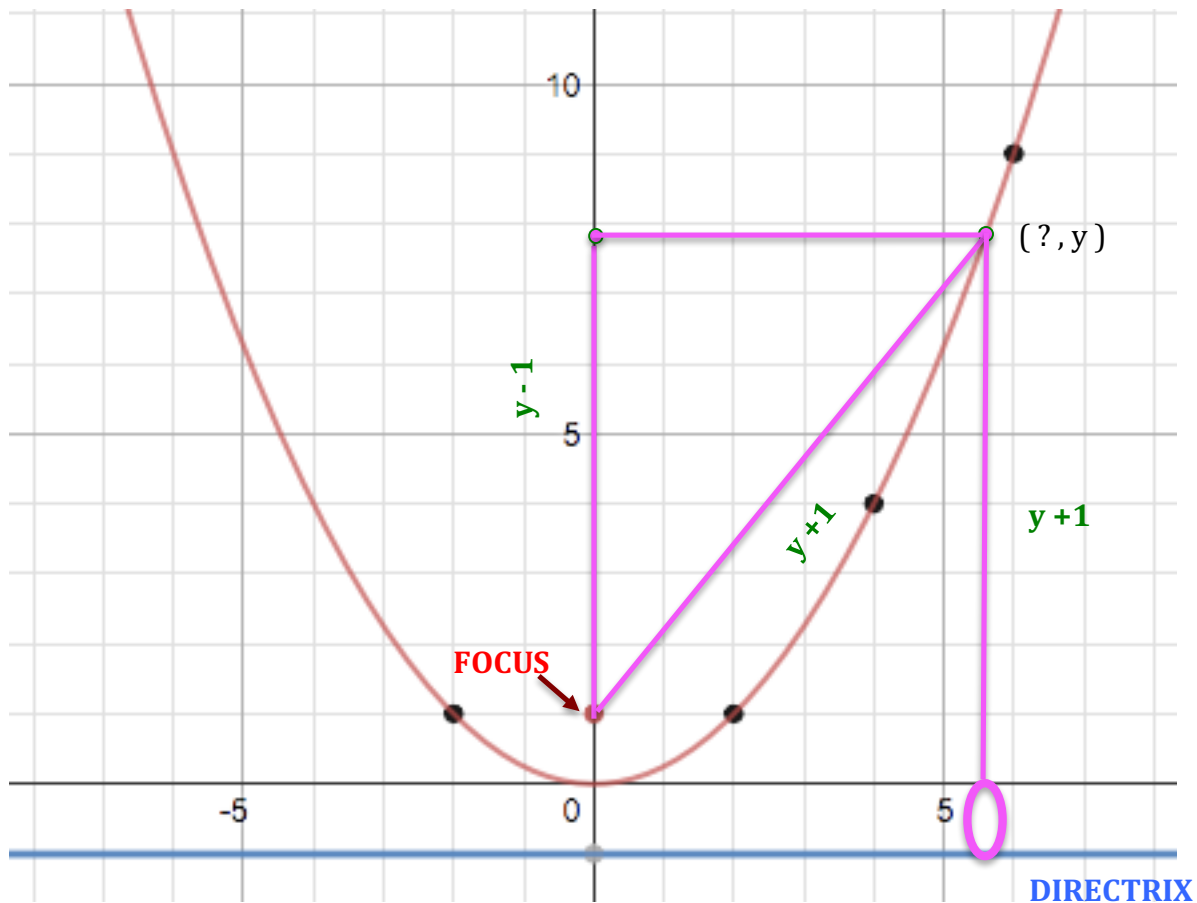


DEFINITION: A parabola is the set of points that are equal distance from the **focus** and the **directrix**.

1. For a general point on the parabola, use the distances from the definition and the Pythagorean Theorem to develop an equation for a point on the parabola. You might want to begin by finding the x-value when the y-value is a specific value, like $y = 6$.



"Student Worksheet: Lesson 3 Episode 2" by MathTalk is licensed under CC BY-NC-SA 4.0