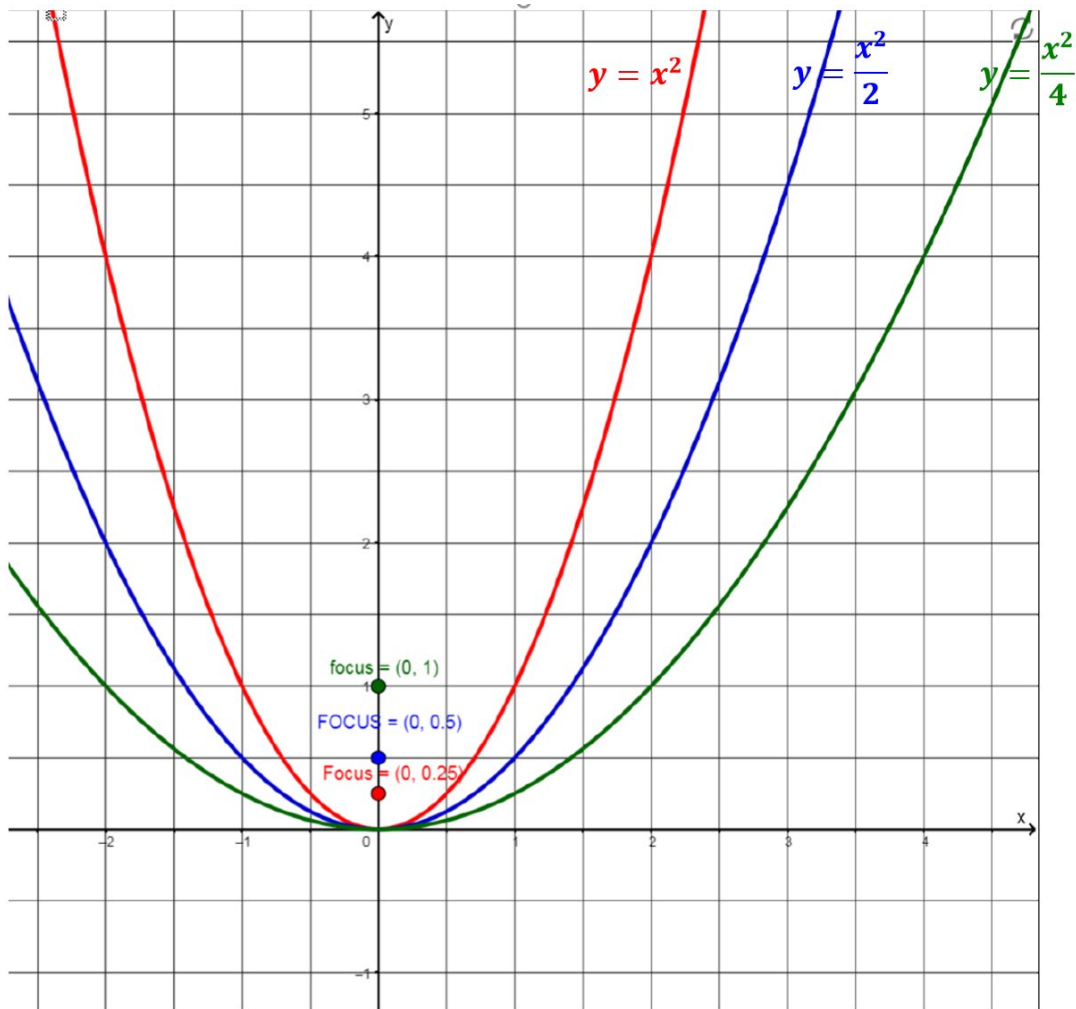


Activity 1 of Lesson 5: Review and Extend

Parameter Change Task: Create an explanation that provides insight into **WHY** the parabola appears to get wider as p increases.



Prepare and practice your solution method from your group's work during Lesson 4, **revoice** one of Sasha and Keoni's methods (that you viewed for Homework 4), or try a **different approach**.