

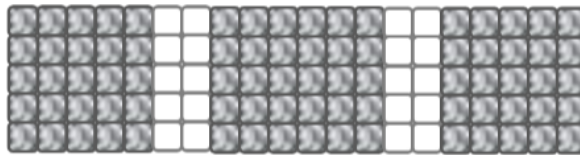
Haleemah and ET's method for finding the number of gray stones in a cobblestone pattern of Size 3 resulted in the arithmetic expression

$$(3 \cdot 3) + (3 \cdot 3) + 3 + (3 \cdot 3) = 30.$$

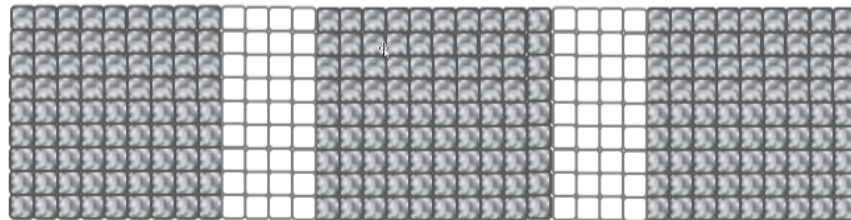
Size 3



Size 5



Size 9



1. a. Write an **algebra** equation that generalizes Haleemah's and ET's method relating the number of gray stones and an unknown Size Number.

b. For each variable you use, write a sentence explaining what that symbol means in the cobblestone pattern context.



2. Create a sketch of a pool whose border has 25 tiles on a side. Explain where you see each part of your **algebra** equation represented in your drawing.

