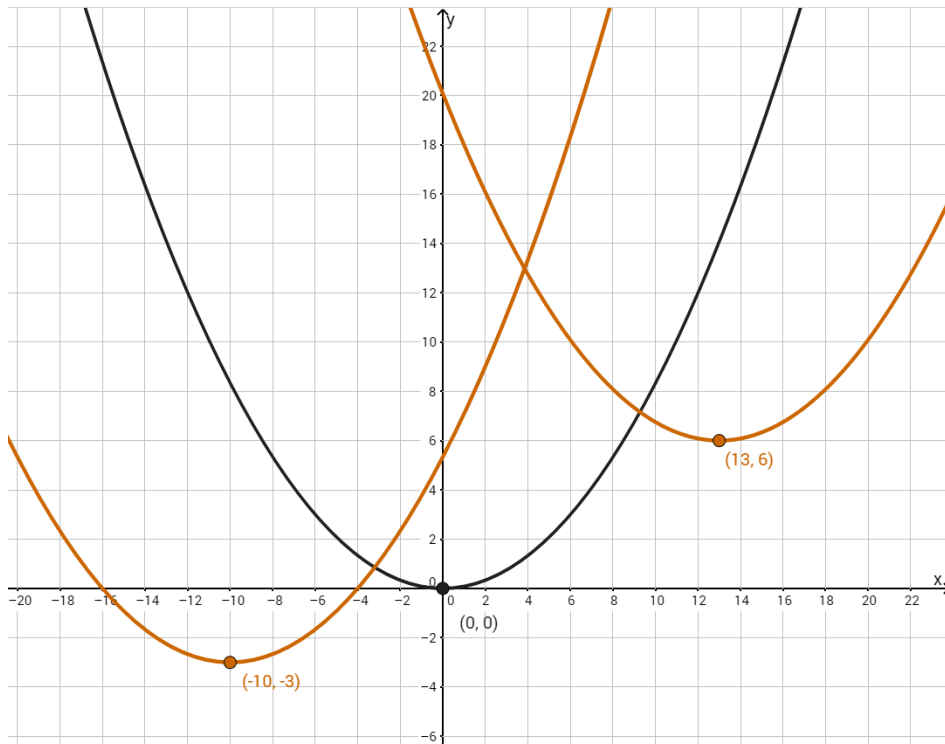


1. Access and play with the [GeoGebra representation](https://tube.geogebra.org/material/simple/id/1420529) (provided in the episode. What do you notice? (GeoGebra URL: <https://tube.geogebra.org/material/simple/id/1420529>)
2. Set the  $p$ -value at  $p = 3$ . Determine a value for  $h$  and  $k$  so that the graph of the red parabola has a vertex at  $(13, 6)$ . What do you notice?
3. Now find a value for  $h$  and  $k$  so that the copy of the parabola has a vertex at  $(-10, 3)$ . What do you notice?



“Student Worksheet: Lesson 8 Episode 1” by MathTalk is licensed under CC BY-NC-SA 4.0

