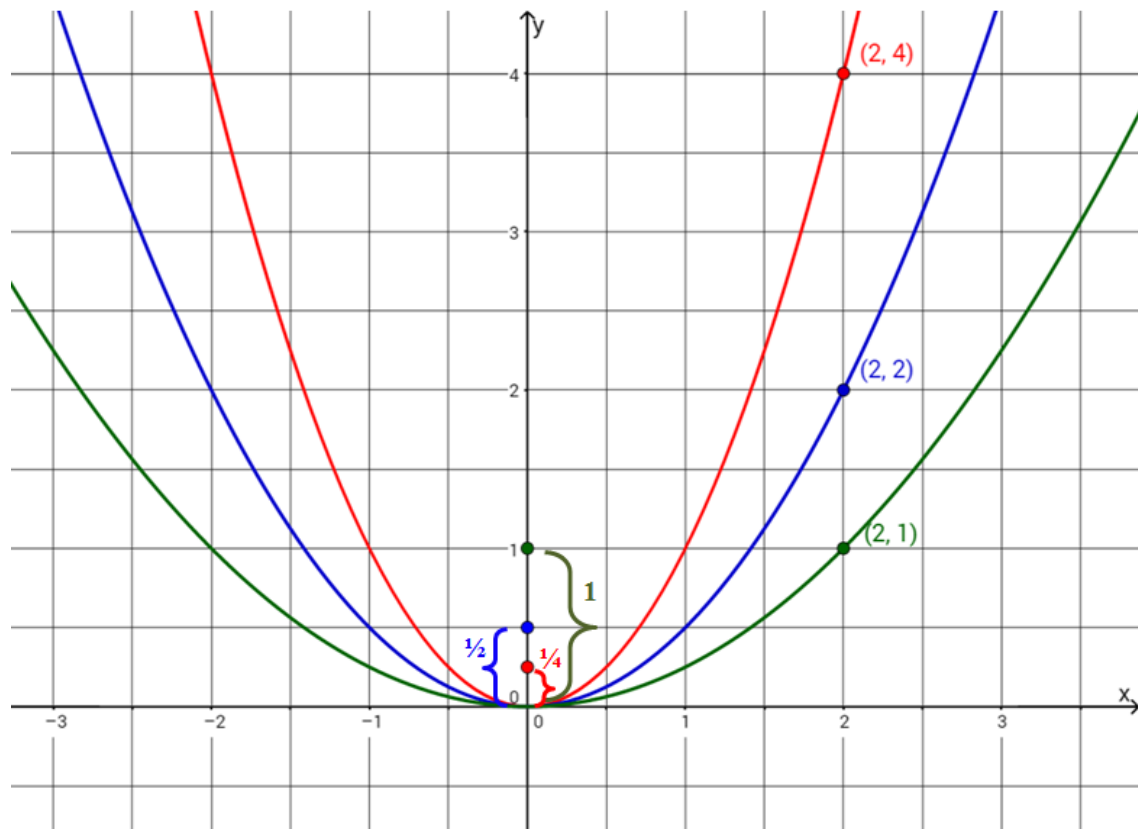


$$\text{General equation for a parabola with a vertex at the origin: } y = \frac{x^2}{4p}$$

1. Consider the parabolas with p values of $\frac{1}{4}$, $\frac{1}{2}$, and 1. Make a claim about the effect that changing the p value has on the shape of the parabola. What is evidence for your claim?
2. What do you notice about the “special points” on each of the parabolas? These are the points on each parabola that are lined up horizontally with the focus for each parabola.



“Student Worksheet: Lesson 6 Episode 5” by MathTalk is licensed under CC BY-NC-SA 4.0